

NEW

HEMOHUB™

INTELLIGENT DATA  
MANAGER

# Centralized management for Hemostasis testing

HEMOSTASIS INNOVATION IS HERE. ▶

 Instrumentation  
Laboratory

A Werfen Company

# Unmatched operational performance and clinical-decision support, all from a single workstation

Today's Hemostasis testing labs are challenged to do more with less. HemoHub Intelligent Data Manager enhances the efficiency of the entire Hemostasis testing operation, improving workflow and decision-making—and ultimately, patient care.



## **Connects all ACL Testing Systems and allows users to centrally:**

- View critical results and analyzer status in real-time
- Manage analyzer quality control simply and efficiently
- Support clinical decision-making
- Optimize operations and facilitate accreditation

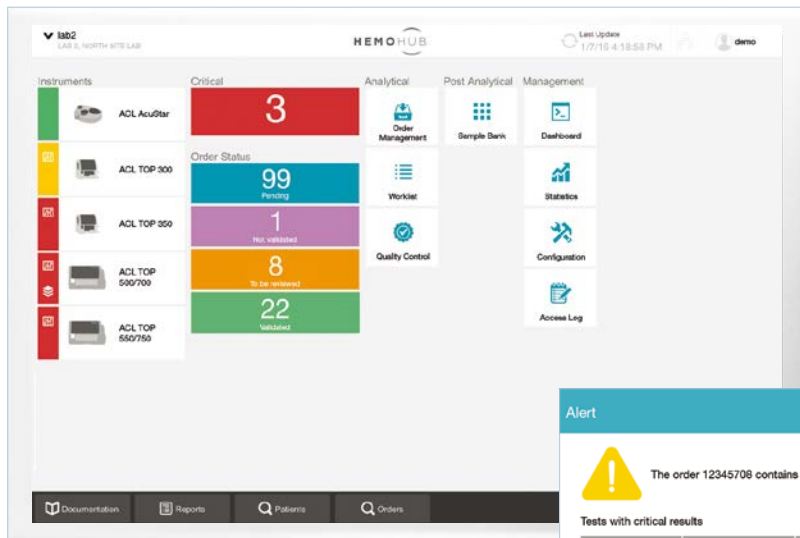
Centralized information management for flexibility, workflow efficiency and better patient care.

**Make the connection, with HemoHub.**



## View critical results and analyzer status in real-time

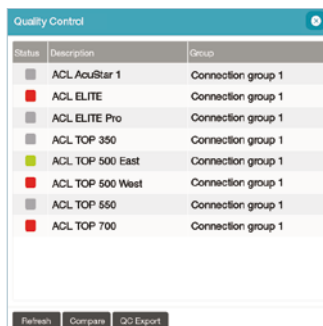
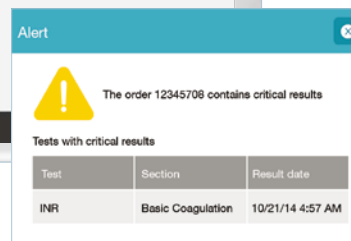
HemoHub offers real-time notification of critical results to help ensure the best patient care.



Home screen dashboard with critical result alerts.

### Monitor critical results

- Flags samples with critical and outlier results requiring urgent review with red indicator
- Records all actions taken on critical results for full traceability



View analyzers' QC status across departments or network.

### View status of all analyzers, any time

- Real-time connectivity status
- Critical QC values ensure quality is maintained

### Maximize analyzer up-time

- System flags instantly alert operator if an analyzer is disconnected

### Minimize workflow interruptions with flagged sample alerts

- Indicates need for redraw or retest, minimizing delays in patient management decisions
- Alerts for analyzer or sample issues

### Experience true scalability

No limit on number of analyzers connected

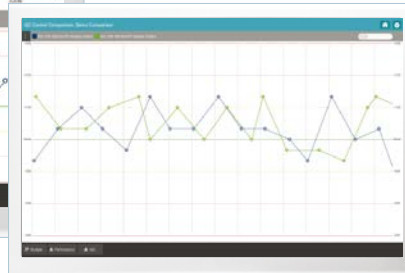
Optimize workflow for greater efficiency, simply.

## Manage analyzer quality control simply and efficiently

HemoHub allows QC management from one central location to ensure quality results from all analyzers. Ultimately, this means time-savings and improved quality management.



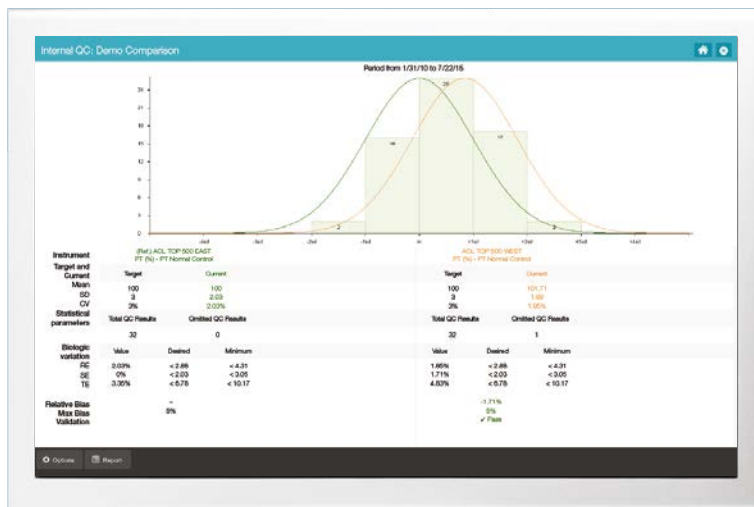
View QC data from different analyzers, side by side.



View QC data from different analyzers in one single graph.

### Compare analyzer QC

- View QC data from multiple IL analyzers



Compare internal QC parameters.

### Compare internal QC

- Set one analyzer as a reference to compare and evaluate key metrics
  - Mean value
  - Relative bias
  - Maximum bias

### Monitor QC continuously with real-time alerts

- Set QC rules
  - Specify conditions and actions for QC
  - Trigger actions, including QC omission
- Set QC alerts
  - Set user notification for out-of-range QC and expired QC material

### Manage QC for any IL Hemostasis analyzer from a single screen

- Auto-upload QC material lot information and expiration date

## Enhance operational performance for quality results, easily.

## Support clinical decision-making

Each patient is unique. HemoHub allows evaluation of results within the context of patient history, to help ensure the best patient care.



View all reaction curves from a single location.

### Centralized view of clot signature curves

- Access reaction curves for all connected IL analyzers from a single interface

Test	11/07/14 12:54:51 PM	11/07/14 12:54:51 PM	11/07/14 12:54:51 PM
PT	5.50	5.55	5.50
PT - TP Activity	9		12
PT - PT (ratio)	70.00		110.00
PT - PT (sec)	11.0		13.0
APTT - APTT (ratio)	0.85		1.00
APTT - APTT (sec)	26.0		36.0
Fibrinogen-derived	150.0		111.0
FH - Factor VII functional	68.0	125.0	115.0
EH - Factor VII	Rejected	Rejected	Rejected
EH - Factor VIII Cr	Rejected	Rejected	Rejected
EH - Factor IX	Rejected	Rejected	Rejected
EH - Factor XI	Rejected	Rejected	Rejected
EH - Factor XII	Rejected	Rejected	Rejected

View patient-results history and trending reports for a complete picture of health.

### Configure rules around patient history and parameters

- Demographics
  - Age or gender can inform result evaluation
- Pathology
  - Can trigger rerun or reflex test
- Patient history
  - Helps clinicians evaluate treatment response and disease progression
- Exportable via Excel

Test	Result	Location	Unit	APTT (s)	PT (s)
PT	5.50	BN	sec	6.90 - 1.20	6.90
PT Activity	11	%		9 - 12	10
PT (ratio)	70.00	ratio		40 - 100	100.00
PT (sec)	12.0	seconds		8 - 16	12.0
APTT (ratio)	1.10	Ratio		0.80 - 1.20	1.00
APTT (sec)	35.0	seconds		25.1 - 35.5	35.0
Fibrinogen-derived	151.0	mg/dL		100.0 - 400.0	204.9

Automatic rerun and reflex testing save staff time.

### Set up automatic reruns and reflexes

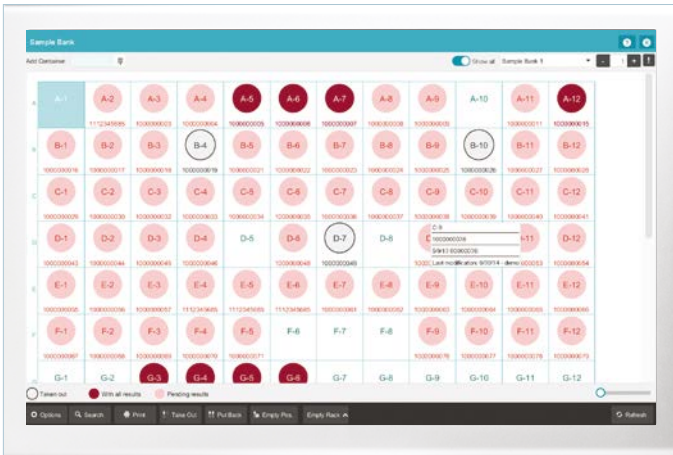
- Set rules to automatically rerun or reflex tests
- View results of multiple reruns side-by-side for faster decision-making
- Exportable via PDF

## Customized patient information supports clinical decisions, quickly.



## Optimize operations and facilitate accreditation

HemoHub includes centralized management of analyzers and test results to ensure quality and efficiency.



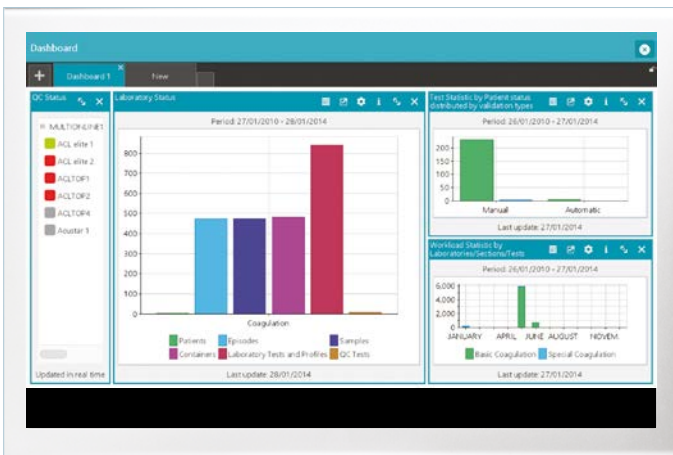
Track specimen containers.

### Simplify sample-bank inventory

- Efficiently manage aliquots and primary tubes, paperlessly

### Manage test orders, efficiently

- Access patient and test orders, easily
- Create work lists, remotely



Customize KPI dashboards for specific performance indicators.

### Run customized reports, quickly

- Run daily reports on statistics, patients and critical values
- Run QC documentation
- Generate work-list reports

### Track Key Performance Indicators (KPIs)

- Highly configurable dashboards allow auto-generated KPI report

### Integrate accreditation support

- Repository keeps all documentation in one convenient, secure location
- Audit-log documents all user actions
- User-access rights ensure operator competency and compliance

Manage it all from one central location, with HemoHub.

# What makes HemoHub unique?

Only HemoHub offers a customized solution for Hemostasis testing to manage workflow, administer quality control and monitor critical values.

## **Flexibility to meet specific lab operational needs**

- One centralized interface for management of multiple networked sites
- Scalable for an unlimited number of patient files and analyzer connections
- KPI-configurable dashboard
- 100+ configurable statistical report formats

## **Efficiency to optimize workflow**

- Simple rerun and reflex processing
- Sample alert flags
- Simplified sample-bank inventory

## **Quality results for better patient care**

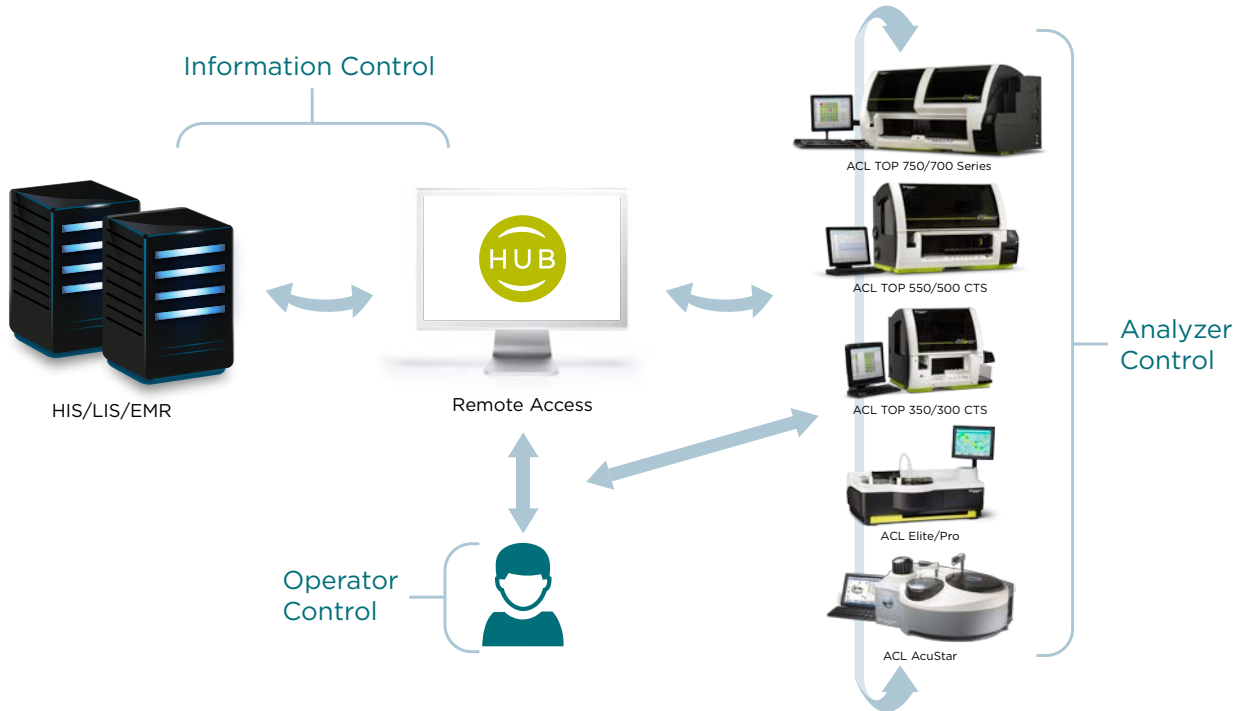
- QC management from one central location
- Easily accessible patient-result histories
- Patient-parameter configured rules
- Integrated accreditation support

**Centralized management for Hemostasis Testing—delivering superior quality management and quality patient results.**



**Enhanced performance, workflow and clinical-decision support.**

HemoHub Intelligent Data Manager standardizes and optimizes Hemostasis testing across systems and networks—for flexibility, efficiency and better patient care.



IL is passionate about bringing the most innovative solutions to Hemostasis testing. Offering a broad range of the highest-quality instruments, data management solutions and a full panel of HemosIL<sup>®</sup> assays—supported by a world-class technical team—IL is committed to enhancing patient care through continuous innovation.

**Werfen Corporate Headquarters**

Plaza de Europa, 21–23  
08908 L'Hospitalet de Llobregat  
Barcelona, Spain  
+34-93-4010101  
werfen.com

**Instrumentation Laboratory Headquarters**

180 Hartwell Road  
Bedford, MA 01730 USA  
+1-781-861-0710  
instrumentationlaboratory.com

**Worldwide Locations**

**The Americas**

- Brazil**  
São Paulo  
+55-11-41543337  
br.werfen.com
- Canada**  
Richmond Hill, ON  
+1-800-552-2025 x6115  
instrumentationlaboratory.com
- Colombia**  
Bogotá  
+57(1)-616-7513
- Mexico**  
Mexico City  
+52-55-5262-1760  
mx.werfen.com
- Uruguay**  
Montevideo  
+5982-481-81-33
- USA**  
Bedford, MA  
+1-781-861-0710  
instrumentationlaboratory.com

**Asia-Pacific**

- Australia**  
Sydney  
+61-02-9098-0200  
au.werfen.com
- China**  
Beijing  
+86-10-59756055  
Hong Kong  
+852-2792-7773  
Shanghai  
+86-21-66308671  
cn.werfen.com
- India**  
New Delhi  
+91-490-29-550  
in.ilwerfen.com
- Japan**  
Tokyo  
+81-3-5419-1301  
jp.werfen.com
- Korea**  
Seoul  
+82-2-5719246  
kr.werfen.com
- Thailand**  
Bangkok  
+66-271-226-28/9

**Europe**

- Austria**  
Vienna  
+43-1-256-58-000  
at.werfen.com
- Belgium**  
Brussels  
+32-2-7252052  
benelux.werfen.com
- Czech Republic**  
Prague  
+420-246-090-931  
cz.werfen.com
- France**  
Paris  
+33-182-30-86-00  
fr.werfen.com
- Germany**  
Munich  
+49-89-909070  
de.werfen.com
- Hungary**  
Budapest  
+36-1-882-73-10  
hu.werfen.com

**Italy**  
Milan  
+39-02-25221  
it.werfen.com

**Lithuania**  
Kaunas  
+370-37-313157  
lt.werfen.com

**The Netherlands**  
Breda  
+31-76-5480100  
benelux.werfen.com

**Poland**  
Warsaw  
+48-22-336-18-00  
pl.werfen.com

**Portugal**  
Lisbon  
+351-214247312  
pt.werfen.com

**Russia**  
Moscow  
+7-499-124-45-59  
ru.ilwerfen.com

**Spain**  
Barcelona  
+34-902-20-30-90  
es.werfen.com

**UK**  
Warrington, England  
+44-1925-810141  
uk.werfen.com

**For all other countries** visit  
international.werfen.com

The Instrumentation Laboratory logo, HemosIL, ACL, ACL AcuStar, ACL Elite, ACL TOP and HemoHub are trademarks of Instrumentation Laboratory Company and/or one of its subsidiaries or parent companies and may be registered in the United States Patent and Trademark Office and in other jurisdictions. All other product names, company names, marks, logos and symbols are trademarks of their respective owners. ©2016 Instrumentation Laboratory. All rights reserved.